

2nd Bb Trumpet

T.K.

© Eric Richards 2018 (BMI)

Written in commemoration of the life of **Tom Kinnison** - ardent advocate and supporter of the arts in Sheridan, Wyoming.
Premiered by the USAF Falconaires jazz ensemble at Kinnison Hall, Whitney Center For The Arts - Sheridan College
Sunday, 23 September 2018

Freely; M.M. ♩ = 68

FLÜGEL (lead.)

Measures 1-5 of the Flugel lead. Measure 1 starts with a 4/4 time signature and a key signature of one flat. The melody begins with a half note G4, followed by quarter notes A4, B4, and C5. Measure 2 continues with quarter notes D5, E5, and F5. Measure 3 has a half note G5, followed by quarter notes F5 and E5. Measure 4 has a half note D5, followed by quarter notes C5 and B4. Measure 5 has a half note A4, followed by quarter notes G4 and F4. Dynamics include *mf* at the start and *p* and *f* later in the phrase.

Measures 6-9 of the Soprano solo. Measure 6 has a half note G4, followed by quarter notes A4, B4, and C5. Measure 7 continues with quarter notes D5, E5, and F5. Measure 8 has a half note G5, followed by quarter notes F5 and E5. Measure 9 has a half note D5, followed by quarter notes C5 and B4. Dynamics include *mf* at the start, *p* in measure 7, and *mf* at the end.

Dictated

15 Funky "2nd LINE" Feel: M.M. ♩ = 100 (Swing 16ths)

Measures 10-13 of the Dictated section. Measure 10 has a half note G4, followed by quarter notes A4, B4, and C5. Measure 11 continues with quarter notes D5, E5, and F5. Measure 12 has a half note G5, followed by quarter notes F5 and E5. Measure 13 has a half note D5, followed by quarter notes C5 and B4. Dynamics include *pp* at the start.

Measures 14-16 of the Plunger section. Measure 14 has a half note G4, followed by quarter notes A4, B4, and C5. Measure 15 continues with quarter notes D5, E5, and F5. Measure 16 has a half note G5, followed by quarter notes F5 and E5. Dynamics include *f* at the start.

Measures 17-26 of the Plunger section. Measure 17 has a half note G4, followed by quarter notes A4, B4, and C5. Measure 18 continues with quarter notes D5, E5, and F5. Measure 19 has a half note G5, followed by quarter notes F5 and E5. Measure 20 has a half note D5, followed by quarter notes C5 and B4. Measure 21 has a half note A4, followed by quarter notes G4 and F4. Measure 22 has a half note G4, followed by quarter notes F4 and E4. Measure 23 has a half note F4, followed by quarter notes E4 and D4. Measure 24 has a half note E4, followed by quarter notes D4 and C4. Measure 25 has a half note D4, followed by quarter notes C4 and B3. Measure 26 has a half note C4, followed by quarter notes B3 and A3. Dynamics include *f* at the start.

Measures 27-30 of the Plunger section. Measure 27 has a half note G4, followed by quarter notes A4, B4, and C5. Measure 28 continues with quarter notes D5, E5, and F5. Measure 29 has a half note G5, followed by quarter notes F5 and E5. Measure 30 has a half note D5, followed by quarter notes C5 and B4. Dynamics include *p* at the start and *f* later in the phrase.

39

**SWING
FUNK**

8

Measures 31-38 of the Swing Funk section. Measure 31 has a half note G4, followed by quarter notes A4, B4, and C5. Measure 32 continues with quarter notes D5, E5, and F5. Measure 33 has a half note G5, followed by quarter notes F5 and E5. Measure 34 has a half note D5, followed by quarter notes C5 and B4. Measure 35 has a half note A4, followed by quarter notes G4 and F4. Measure 36 has a half note G4, followed by quarter notes F4 and E4. Measure 37 has a half note F4, followed by quarter notes E4 and D4. Measure 38 has a half note E4, followed by quarter notes D4 and C4. Dynamics include *f* at the start.

39-46

47 **SOLI** **2nd LINE groove**

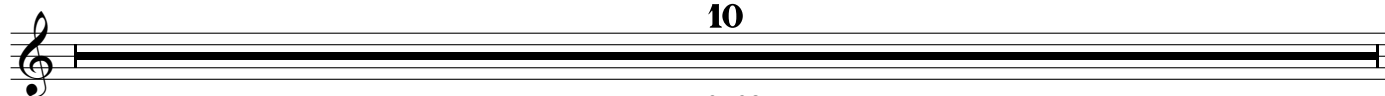


SOLI w. Sop.1/Trb. 2

57



10



OPT. SOLO break

70

OPEN for SOLOS (Backgrounds as desired ON CUE)

T.K. - 2nd Bb Trumpet - p.3

If only 1X-1 soloist, BKGDS IN @ 94

69

G7(#9) C13 Bb13 C13 Db13(#11) Eb13 E13

74

F13 Bb13 Eb13(#11) Ab13(#11) Bb13 B13 C13 Eb7/A

78

Dmi9 C(sus2)/E F9 F#o7 FMA7/G G7(#9) F7/C C13

82 **SWING
FUNK**

(+ BKGDS. if only 1X-1 soloist)

F13 C13 F13 C13

86

Eb13 Bb13 A7(#9) Abmaj9(13) G7(#9)

90 **2nd LINE groove**

C13 Bb13 C13 Db13(#11) Eb13 E13

94

F13 Bb13 Eb13(#11) Ab13(#11) Bb13 B13 C13 Eb7/A

98

Dmi9 C(sus2)/E F9 F#o7 FMA7/G G7(#9) F7/C C13

102 **OPEN Drum Groove Solo**

HANDCLAPS

104

Ens. Soli ON CUE

108

116 SOLI

119 *mf* *ff*

122 *f* *mf*

125 *ff*

128 SWING FUNK

130-134 *f* *ff*

2nd LINE groove: Bring It Home!

138 SOLI

136-137 *ff*

140

143

146 *p* *ff*

147-150 **4**

SOLI w. Sop.1/Ten. 3

152

OPEN for Group JAM: "Build the SWIRL..."

T.K. - 2nd Bb Trumpet - p.5

151

C¹³ B^b13(#11) C¹³ D^b13(#11)

156

ONward ON CUE

C¹³ B^b13(#11) C¹³ D^b13(#11)

160

C¹³ B^b13(#11) C¹³ D^b13(#11)

164

C¹³ B^b13(#11) C¹³ B^b13(#11) A⁷(#9) A^bmaj9(13) *ff*

170

Freely; M.M. ♩ = 60

168

Fmaj⁷/G *p* 7 170-176

178

Piano 3 3 3 3 3 3 *ff* C¹³(#11)

e.j.r.

12 Sep 2018